

Home Bucket Drumming

Lesson 6

David Birrow

Bucket Legend

Center Rim Side Stick Click

The legend shows four symbols on a five-line staff with a treble clef and a 6/8 time signature. 'Center' is a quarter note on the second line. 'Rim' is a quarter note on the second line with a vertical line above it. 'Side' is a quarter note on the second line with a vertical line to its left. 'Stick Click' is an 'x' on the second line.

ECHO PATTERNS

1 2

Pattern 1: A 6/8 staff with a treble clef. It starts with a quarter note on the second line, followed by a dotted quarter note on the second line. The second measure contains a beamed eighth-note pair on the second line, a quarter note on the second line, and a dotted quarter note on the second line. Pattern 2: A 6/8 staff with a treble clef. It starts with a quarter note on the second line, followed by a dotted quarter note on the second line. The second measure contains a quarter rest, a dotted quarter note on the second line, and a quarter note on the second line.

3 4

Pattern 3: A 6/8 staff with a treble clef. It starts with a quarter note on the second line, followed by a dotted quarter note on the second line. The second measure contains a quarter note on the second line, followed by a dotted quarter note on the second line. Pattern 4: A 6/8 staff with a treble clef. It starts with a beamed eighth-note pair on the second line, a quarter note on the second line, and a dotted quarter note on the second line.

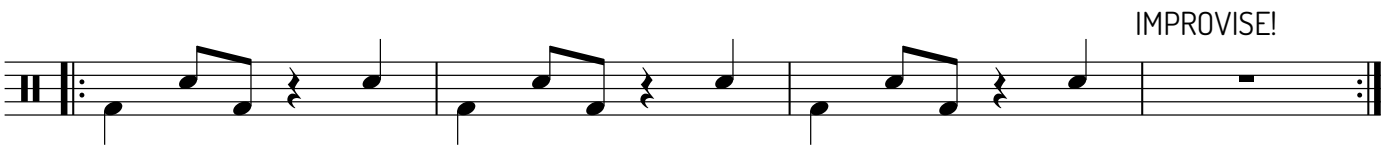
5 6

Pattern 5: A 6/8 staff with a treble clef. It starts with a quarter note on the second line, followed by a dotted quarter note on the second line. The second measure contains a quarter note on the second line, followed by a dotted quarter note on the second line. Pattern 6: A 6/8 staff with a treble clef. It starts with a quarter note on the second line, followed by a dotted quarter note on the second line. The second measure contains a quarter note on the second line, followed by a dotted quarter note on the second line.

7 8

Pattern 7: A 6/8 staff with a treble clef. It starts with a quarter note on the second line, followed by a dotted quarter note on the second line. The second measure contains a quarter note on the second line, followed by a dotted quarter note on the second line. Pattern 8: A 6/8 staff with a treble clef. It starts with a quarter note on the second line, followed by a dotted quarter note on the second line. The second measure contains a quarter note on the second line, followed by a dotted quarter note on the second line.

FINAL SONG



PLAY WHATEVER YOU WANT!

